

# AIB2B

ENGAGING QUALITY PROFESSIONALS TO IMPACT COMMUNITIES

## OUR MISSION IS SIMPLE



### CHARITABLE

Connecting our members with the most high-integrity charities to perform "random acts of kindness".



### CULTURAL

Pushing for fair representation of Asians in print, online, movies and television, ending negative stereotypes.



### POLITICAL

Pushing for more Asian Americans in government, furthering our family and pro-business values.

# NOTE FROM AIB2B PRESIDENT

September was a busy month but October will be even busier as we have volunteer opportunities with Santa Claus Inc and the Education Fair in Yucaipa. Please join us for these events.

In September, we had a great event with Assemblyman Thurston Smith, our bi-monthly networking mixer at Raw Cantina and a nice member tour for St Camillus, the original General Hospital location.

Mail in ballots should be coming in. We heavily endorse common sense candidates, and encourage to vote against the incumbent party when possible, but vet those Republican candidates carefully. But we stand behind Democrats Alex Villanueva and Rick Caruso for Sheriff and Mayor, respectively.

Marc Ang  
President/Founder, Asian Industry B2B  
Chinese American Citizens Alliance Orange County







## VISITING ST. CAMILLUS CENTER

LOS ANGELES, CA

This month, AIB had a second tour of St. Camillus Center in Los Angeles.

St. Camillus is a network of Catholic chaplains that collaborate with the other chaplains of the Interfaith Chaplaincy Center. They provide hope and healing to anyone looking for help including those at the USC School of Medicine. It was even featured in an episode of the hit TV show General Hospital.

To learn more please visit [stcamilluscenter.org](http://stcamilluscenter.org)











## A GREAT BUSINESS MIXER

RANCHO CUCAMONGA, CA

Lots of networking at our September business mixer, once again at our member restaurant Raw Kitchen & Cantina in Rancho Cucamonga. Delicious Asian Mexican fusion, and everyone got to stand up and talk about their business over the PA System. If you work in the area, join us every other month as we network and Foodie out.







## MEET AND GREET W/ ASSEMBLYMAN SMITH

HIGH DESERT, CA



Marc Ang had lots of AIB2B members and friends from the local community over to hear Assemblyman Smith talk about protecting property rights and rural homesteads. We even had a helicopter land to join us.



# UPCOMING EVENTS




A promotional poster for a volunteer event. On the left, a photograph shows three young people smiling; a young man in the foreground is holding a stack of colorful books. The background is a collage of red and green. Text on the right side of the poster includes the date and time, the event name, the organization's logo, and the address.

**SAT  
10/8  
10 am**

ASIAN INDUSTRY B2B  
**VOLUNTEER  
FOR  
SANTA CLAUS INC**

 **santa  
clausinc**

824 6TH ST #4509  
SAN BERNARDINO, CA 92410



A colorful poster for an Alternative Education Fair. The background is light blue with yellow and orange abstract shapes and confetti. At the top, a banner reads 'AIB2B Presents:'. The main title 'Alternative Education Fair' is in large, bold, dark blue letters. Below the title, there are three photographs: three goats in a wooden enclosure, a food truck with people, and a child jumping on a yellow inflatable. The date and time are listed in a yellow and orange shape on the right. On the left, a blue shape lists activities. At the bottom, the date 'OCTOBER 2022' and the website 'AIB2B.ORG' are displayed.

**AIB2B Presents:**

# Alternative Education Fair

**October 22, 2022  
11 am to 4 pm**

**Petting Zoo  
Bouncy Castle  
Food Trucks  
Educational Resources**

**OCTOBER 2022**

**AIB2B.ORG**





# SECURE TRUCKLOAD PROGRAM

DIAMOND BAR, CA

**Due to LA Port Congestion, trucker shortages and fuel charges continually increasing, Port Alliance would like to introduce our Truckload Secured Program.**

**Please see our flyer and rate sheet.**

**The truckload space is limited and first come first serve. (100 ctr per month). If this program is good for your shipment, please book with us in advance so we can reserve the space for Xiamen Supertrans Logistics Co., Ltd. (Xiamen, Head Office).**

**Please note that we also service cold storage needs in the Pacific Southwest of California, Nevada, Arizona and the rest of the west coast by utilizing different sizes of equipment from 20' bobtails to reefer 53' trailers and a facility equipped with a large freezer, large cooler and a temperature-controlled loading area for storage and consolidation.**

**The truckload space is limited and first come first serve. (100 ctr per month). If this program is good for your shipment, please book with us in advance so we can reserve the space for Xiamen Supertrans Logistics Co., Ltd. (Xiamen, Head Office).**

**We also service cold storage needs in the Pacific Southwest of California, Nevada, Arizona and the rest of the west coast by utilizing different sizes of equipment from 20' bobtails to reefer 53' trailers and a facility equipped with a large freezer, large cooler and a temperature-controlled loading area for storage and consolidation.**

**Please contact Marc Ang at [marc@aib2b.org](mailto:marc@aib2b.org) if you are interested.**





## PORT ALLIANCE LOGISTICS INTERNATIONAL INC.

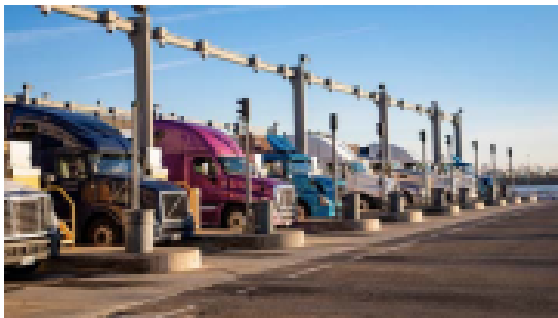
Over 20 years in the industry, Port Alliance Logistics services over 10,000 TEUS of global shipments annually.

### PORT OF LOS ANGELES

The entrance for almost 40% of imported goods in the United States, port congestions and delays are expected to continue through 2022...

As the global shipping crisis continues, PORT ALLIANCE LOGISTICS has assembled an alliance of truck fleets specifically for the Port of Los Angeles to PICK-UP and DELIVER your shipments in the MOST TIMELY manner!

100 TRUCKLOADS PER MONTH ALLOCATION!  
CALL AND INQUIRE NOW!



## PORT ALLIANCE LOGISTICS INTERNATIONAL INC.

20955 Pathfinder Rd, Suite 230 Diamond Bar, CA 91765, USA

ANTAO CHEN

Tel: +1 888 853 1357 Fax: +1 888 835 4154

E-Mail: [antaochien@port-alliance.com](mailto:antaochien@port-alliance.com)



# GENERAL LABOR TRABAJO

**STARTING PAY**  
**\$15.50 - \$17.00**

COLD ENVIRONMENT

1st Shift: 5AM-1:30PM; 5:30AM-2:00PM; 6AM-2:30PM;  
8:30AM-5PM

Mid Shift: 11:00 AM-7:30PM; 12PM-8:00; 1PM-9:30PM

**PICKER, PACKING,  
CUTTER**

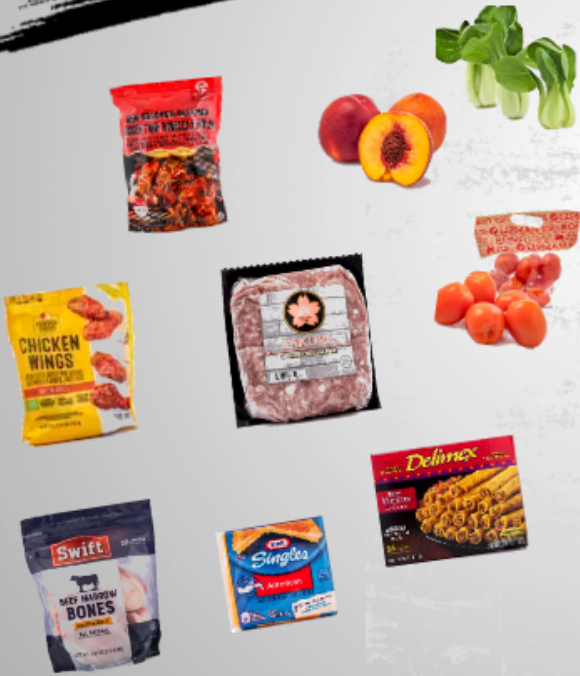
Application Hours

**MONDAY- FRIDAY**

at 9:00am to 3:00pm

1440 N HARBOR BLVD STE 615, FULLERTON CA 92835

IG:@Jobsource\_Fullerton



**APPLY NOW**

**657-253-1546**

[WWW.JOBSOURCE.COM](http://WWW.JOBSOURCE.COM)